

Lowell Parks & Conservation Trust

Fall 2007 Newsletter

PRESIDENT'S LETTER

Dear Friends,

As leaves begin their annual fade to yellow and summer draws to a close I am amazed at the progress the Lowell Parks & Conservation Trust continues to make and the programs we continue to undertake and move forward.

Working with the City of Lowell, the Lowell National Historical Park and neighborhood groups, and with the generous support of our grant funders and members, we're advancing a number of large and small programs including the Concord River Greenway, Spalding House improvements, "Pawtucket Falls Overlook Park", and, of course, fall begins another tree planting season. Particularly exciting is our teaming up with the Trustees of Reservation to explore acquiring our first Conservation Restriction that will result in the preservation of 5 acres of historic farmland and open space between Varnum Avenue and Regatta Field. Known as Hawk Valley Farm and adjacent to the Varnum homestead, this precious acreage will be preserved and enhanced and will become a critical piece in our efforts to create a continuous link between the river and the State Forest.

All of these activities have been sustained by our members' generous support. This past year alone saw an increase of 13% in membership support. THANK YOU! Your commitment to our mission and your confidence in our activities and our staff's efforts are tremendously rewarding and greatly appreciated.

I want to make special note of the efforts of Kristin McCauley for her dedicated and enthusiastic efforts as Project Specialist over the past six years. Kristin has been a great asset to the organization, working as a valued team member along with Executive Director Jane Calvin. We wish her well in her new endeavor and thank her for all she has done for the Trust.

At the same time I want to extend a warm welcome to Brian Cutler. Brian has been a longstanding volunteer with the Trust and has also taken on some special projects, including the Concord River inventory and seasonal help with rafting. His strong background in environmental education will prove of great benefit to the Lowell Parks & Conservation Trust.

And so as the seasons change we again affirm our commitment to improving the quality of life in Lowell through land and historic site preservation, neighborhood park development, environmental programs, riverfront restoration and educational outreach. I thank all of you who help make this possible throughout the year.

Kind regards,

Concord River Kayak Trip

Saturday, October 20th, 10am-12noon

See our **Calendar of Events**, page 3, for more information.

Limited to 12 spaces!

URBAN LAND PROTECTION

"New parks in [the state] will play a special role in curbing exurban growth. By providing convenient opportunities for outdoor recreation in cities they lessen the pressure on families to move to newly developing areas, with all the extra commuting that entails. Urban parks are also an antidote to the growing obesity problem among young people."

Editorial, Boston Sunday Globe, August 12, 2007

The Lowell Parks & Conservation Trust is helping to promote a greater understanding of the complexities of urban land protection. We've worked nationally through the Land Trust Alliance, an association of the 1,600-plus land trusts across the country; helped coordinate three statewide conferences or forums on urban land protection; and participated in review of the land trust accreditation process to ensure a voice for urban land trusts. Recently, as an outcome of our urban land protection work in cooperation with organizations such as Groundwork Lawrence, the Greater Worcester Land Trust, and the Massachusetts Executive Office of Energy and the Environment, Governor Patrick recently announced a focus on establishing more urban parks in the state's 50 cities. Nationally, this puts Massachusetts at the forefront of addressing urban land protection.

The field of land conservation is very much geared toward more rural properties that vary in natural resource attributes. Urban land protection occurs on a much smaller scale. We often say that a 1-acre property in Lowell might be worth 1,000 to a larger organization such as the Nature Conservancy. Through our work with other urban land trusts across the country we're hoping to change perceptions of the value of our work in the field. Please see page 4 to learn more about what we hope will be our first "conservation restriction" in Lowell.



Several local youth learn fish/nature printing on t-shirts with Kristin McCauley, LP&CT Project Specialist, as a thank you for their 3 week long effort to clear out the property behind the former Red Cross property in anticipation of it becoming a park. Pictured are (L-R) Leah Weinrich, Nick Colella, Elaina Hancock, Helen Sequeria, and Kristin McCauley. Not pictured are: Allyson Comeau and Krystal Vezina. **See page 3 for more...**

URBAN FORESTRY

The Lowell Parks & Conservation Trust is pleased to receive a grant from the City of Lowell's Community Development Grant Program. This grant funding enables us to enhance Lowell's urban forest canopy, improve air quality, and make Lowell a better place to live through tree planting projects. This past year **LP&CT provided support and trees for the planting of 148 trees for 34 projects.** We're fortunate to work with diverse partners throughout the city. One particular project this past spring stood out as we provided technical assistance and trees for the recent expansion at **D'Youville Senior Center:**

"We were thrilled when [the Trust] contacted D'Youville with an interest to donate several trees this past spring. With our phase I of affordable housing for seniors (Bruyere Gardens) newly completed and no additional money in the budget for landscaping, her call was a welcomed surprise. The trees were planted in June and have been a delight to our new tenants ever since. It is the community partnerships we share with the many wonderful organizations like the Lowell Parks and Conservation Trust that help make D'Youville an exceptional place for seniors in need of nursing care or affordable housing to be served. We are very grateful for this wonderful donation." Naomi Prendergast, Chief Executive Officer

LP&CT RECEIVES SIGNIFICANT GRANT SUPPORT FROM:

Theodore Edson Parker Foundation
City of Lowell CDBG Program
Massachusetts Cultural Council



Art and Community Landscapes
 (a partnership of the National Endowment for the Arts,
 the National Park Service and the New England Foundation for the Arts)

Baldwin Foundation

Joseph & Eileen Donahue Foundation

The Entrust Fund Aubert J. Fay Foundation

Fields Pond Foundation

Green Leaf Foundation

Greater Lowell Community Foundation

Massachusetts Foundation for the Humanities

New England Foundation for the Arts/Fund for the Arts

Nathaniel & Elizabeth P. Stevens Foundation

Patrick J. Mogan Cultural Center

Richard K. Donahue Sr. Park Maintenance Fund &

Alfred H. and Kathryn E. Coburn Park Fund

of the Greater Lowell Community Foundation (GLCF)



Massachusetts Cultural Council

MASSACHUSETTS
 FOUNDATION FOR THE
Humanities
Bringing Ideas to Life

**WE THANK THE FOLLOWING FOR
 SIGNIFICANT IN-KIND SUPPORT:**



Anstiss & Co., P.C.
Eno, Boulay, Martin & Donahue
LDFC/Lowell Plan

CONCORD RIVER PUBLIC ART

Trails & Art? You bet! LP&CT has been receiving technical support from the National Park Service's Rivers, Trails, and Conservation Assistance Program to integrate artistic elements into the design of the Concord River Greenway. Last fall the 25% (conceptual) design of the Concord River Greenway was completed by EarthTech. Many of you, as members, came to public meetings to provide input on the design. Alongside the development of the conceptual plan for the Greenway, we were also working with the artist team of Mags Harries and Lajos Héder (Harries-Héder Collaborative) to develop the public art plan.

By integrating art early into the design of the Greenway we hope to ensure that the trail is a destination type project that will inspire people and allow them to better enjoy the river corridor—and come frequently to visit. The public art plan isn't necessarily about placing pieces of art at various locales along the Greenway; it's more about integrating aesthetic elements into the design of the trail corridor to enhance the experience rather than detract from the natural beauty of the Concord River. The Harries-Héder Collaborative provides several examples such as carving existing boulders for seating, creating places to enjoy the scenic vistas by utilizing natural granite block amphitheaters, and incorporating human artifacts (e.g. remnant cement structures) into the design. You can learn more about the public art plan for the Greenway by visiting: www.nefa.org/grantprog/fundforarts/documents/FFAConcordRiverBook.pdf.

With both the 25% design and the public art plan complete, we're now moving ahead with final design. The City of Lowell has hired EarthTech to continue with final design. The project will be completed in three sections with construction on the northern and southern sections happening in 2008. Concurrently, we're seeking an artist team to integrate aesthetic elements of the bridges and gateways into the final design. LP&CT has been chosen to receive an Art & Community Landscapes grant, provided in partnership through the National Endowment for the Arts, the National Park Service and the New England Foundation for the Arts. A local selection committee recently met to choose finalists from the amazing 63 responses to the national call for qualified candidates.

Funding to continue LP&CT's involvement and facilitation of the project comes from the EPA Healthy Communities Program, local corporate sponsors such as 3M and many local businesses, several other foundations listed at left, and **members like you!** Join us for a Greenway tour on Sat., Sept. 29th (9-12) at the Lawrence Street entrance to the Lowell Cemetery.



A bicyclist on the future Concord River Greenway, riding along the southern end at the Davidson Street parking lot. Drawing from the "Public Art Plan for the Greenway" by the Harries-Héder Collaborative.

RIVERFEST 2007

Last June, LP&CT hosted our third annual Riverfest event at Muldoon Park on the Concord River. Free flat water raft trips were offered all morning while Alex Dumas with the Lowell National Historic Park provided a serene background of music from the riverbank. REI co-hosted the event offering outdoor recreation advice, coupons, and giveaways to those stopping by their booth. Mass Audubon, a partner in our afterschool program *Backyard Adventures!*, presented a live animal demonstration displaying native turtles, ducks, and variety of hands-on explorations. Congratulations to Donald McIver for winning our Riverfest Raffle—a rafting trip for two on the Concord River! The nearly 100 people in attendance enjoyed a variety of activities. We hope to bring back the event next year with even more activities for this growing annual event.



SPALDING HOUSE

SPALDING HOUSE RECEIVES FUNDING FOR WINDOW RESTORATION

The Lowell Parks & Conservation Trust is pleased to be one of only two recipients in Lowell of a Cultural Facilities Fund (CFF) grant to support window restoration at the Spalding House. The Legislature created the Cultural Facilities Fund in July, 2006 appropriating an initial \$13 million as part of an omnibus economic stimulus bill. The FY 2008 state budget provided an additional \$5 million. MassDevelopment and the Massachusetts Cultural Council (MCC), co-administer the program. MCC received 201 requests for funding totaling \$80 million, selecting a total of 45 grants from the pool. LP&CT received a \$21,000 grant that must be matched one-to-one with funds from private sources. The total projected cost of window restoration is \$50,000 for which we'll be looking for additional sources. We thank our state delegation for their foresight in helping to create this important funding source for much needed capital improvements throughout the state.

YOUTH HELP CLEAR FUTURE PARK SITE

We thank the Lowell National Historical Park for their assistance in clearing the future park site behind the former Red Cross building and the Spalding House. LNHP received a grant from Nature Valley (known for their granola bars!) to provide a summer youth service-based program. The six youth spent three weeks clearing the property of years of debris, learning about the Spalding House and how we protected the site from development, as well as taking in some adventure learning opportunities on Thompson Island and here in Lowell. See photo on page 1.

E-NEWS

Please e-mail us at

bcutler@lowelllandtrust.org

to provide your e-mail address (never shared!) so that you can get our newly formatted e-news with updates on events, volunteer opportunities and other LP&CT news! Look for our new e-mails by the end of September. It's the best way to stay in touch our programs and activities!

UPCOMING EVENTS

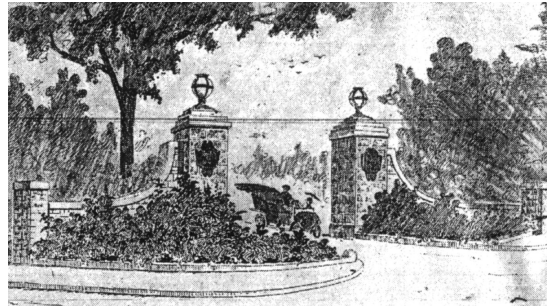
Concord River Greenway Tour

Saturday, September 29, 2007, 9am-12pm
Meet at Lowell Cemetery entrance off Lawrence Street.

Put on your hiking shoes for a fall foliage hike along the corridor of the future Concord River Greenway (construction to begin in 2008)! See a large layout of the Greenway plans, view the public art plan, and learn about how we'll connect the trail with the Bruce Freeman Trail (now in construction) at CrossPoint. Wear long pants, hiking shoes/socks, and bring water. Rain or shine. **Please RSVP (978) 934-0030.**

Freedman Ballard Shedd - A Legacy Gift

Thursday, October 4, 2007, 6:30 pm
Pollard Memorial Library, Community Room, 401 Merrimack Street



In July of 1910, Freedman Ballard Shedd, partner in W. Hoyt and Company, presented to the City of Lowell a fifty-acre tract of land in the Belvidere section of the city to be used as a city park. Come celebrate Mr. Shedd's generous gift to the city and learn more about how one man changed the city's landscape. The program is free and open to all. *Presented by Stephen A. Conant, past president of the Lowell Parks and Conservation Trust.*

Concord River Kayak Trip

Saturday, October 20, 2007, 10am-12noon

Join us as we kayak from the Billerica to Lowell on a seldom seen section of the Concord River. We'll finish at the boat ramp at Muldoon Park on the Concord. Kayaks are double sit-on-tops (i.e., plan on having a wet seat). Wetsuits provided if needed, wear a bathing suit, more details with your reservation. **Trip is limited to 12 people.** Fee: \$25 per person (\$30 for non-LPCT members); \$15 if you bring your own kayak. To reserve your space, please send a check to LP&CT, PO Box 7162, Lowell, MA 01852—be sure to include an e-mail.

Annual Meeting

Thursday evening, November 15, 2007
At the Revolving Museum in downtown Lowell

Save the Date!

Look for your invitation in the mail in late October.

This festive event will provide you an opportunity to meet the artists involved in the Concord River Greenway!

BACKYARD ADVENTURES

Exploring the Habitats of Lowell: Backyard Adventures! Is expanding this fall to a **third site** at the Robinson School's Citizen School apprenticeship program. Two years ago Project Specialist Kristin McCauley launched our partnership with Mass Audubon at the Wang School's Citizen School program on Tuesday afternoons. Last year the program was successfully brought to Girls, Inc. For ten weeks middle school youth learn about their own 'backyard' in Lowell, exploring the state forest, water sampling on the Concord, taking a canal boat trip, wildlife tracking in winter, and getting up-close visits with a variety of wildlife. Community members also get involved to share their expertise in a local park, Native American culture, or urban forestry. Backyard adventures is a growing program that's always seeking new partners, program sites, volunteers, and special places for youth to explore. Please call us at (978) 934-0030 to share your ideas with us.

THANK YOU, KRISTIN & WELCOME, BRIAN!



After spending six years with the Lowell Parks & Conservation Trust, Project Specialist, **Kristin McCauley**, has decided the return to her prior work in market research. In joining the Trust as our second staff person, Kristin helped significantly with our organizational growth, creating her own niche in establishing our environmental education program *Exploring the Habitats of Lowell: Backyard Adventures!*, pushing forward with our efforts to restore herring to the SuAsCo

watershed (despite all odds!), sustaining our rafting program through drought and flood, expanding our active corps of volunteers (of all ages), and putting all the pieces in place for our next stage of interior restoration at the Spalding House. This list hardly reflects her true enthusiasm, 'can do' attitude and strong rapport with our many partner agencies, members and volunteers. We thank you, Kristin, for your dedication to the Trust over the past several years! You will be missed by many!

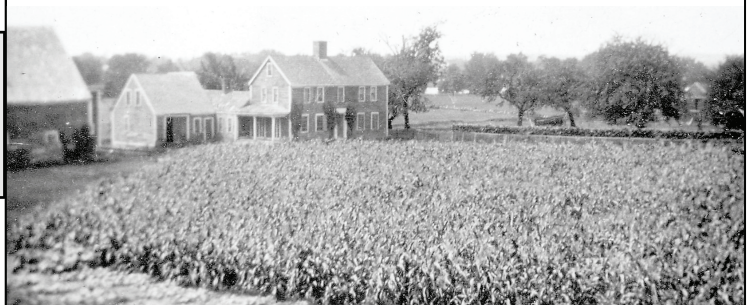


We're pleased to introduce **Brian Cutler** as our new Project Specialist. Brian has volunteered and worked on special projects for the Trust for several years, including for our rafting program, the Concord River Greenway, land stewardship, and at many events. Brian brings a strong background in environmental education and is currently sharing his time with Audubon as a Teacher Naturalist. Last summer Brian was a team leader with Groundwork Lawrence's Outdoor Youth Corps tackling environmental restoration projects along the Merrimack River. During college

Brian traveled to Costa Rica to learn about sustainable development and environmental issues as a part of his self-directed studies for his Bachelors degree in Environmental Education and Spanish Education. Brian looks forward to being a larger part of the Trust's work and building on Kristin's initiatives! Email Brian at bcutler@lowellandtrust.org.

HAWK VALLEY CR

The Lowell Parks & Conservation Trust is exploring a partnership with The Trustees of Reservations to co-hold a conservation restriction on 5 acres off Varnum Avenue, known historically as the Hawk Valley Farm. This property was prioritized in the City of Lowell's Open Space and Recreation Plan (2005) and the Pawtucketville Neighborhood Master Plan (2006) for permanent protection. In May, the City Council voted unanimously for the intent of protecting the property in perpetuity while still allowing for the development of a single 10,000 sq. ft. house lot (where a house had been prior). A conservation restriction will protect the property in perpetuity from further development and provides a key link between the Lowell-Dracut-Tyngsborough State Forest and the Regatta Field abutting the State Heritage Park. *Picture below of Hawk Valley Farm provided by Louisa Varnum.*



COBURN PARK 100TH ANNIVERSARY

IN REMEMBRANCE OF
GRATIA ANN PARKER COBURN
WHO DONATED THIS LAND TO
THE CITY OF LOWELL FOR
COBURN PARK IN 1907

One year after the rededication of Coburn Park (at the corner of Chelmsford & Stevens Streets), we celebrated the park's 100th anniversary with the installation of a new bench donated by Mr. Alfred H. Coburn. Mr. Coburn wanted to honor Gratia Ann Parker Coburn's foresight in establishing the park in 1907. There

were originally two benches in the park design, so this third bench adds nice balance to the walkways in the center of the park that surround the monument. Look for further improvements at the park including a large bulb planting to add to the palate of spring color. We thank the friends and neighbors of Coburn Park that diligently care about this special corner, whether volunteering for plantings or making an effort to pick-up trash as they pass through.



Thank you members...

PLEASE NOTE: ALL DONATIONS LISTED BELOW WERE RECEIVED BETWEEN **June 9, 2007—August 20, 2007**

SUSTAINING "GREEN" MEMBERS

Sustaining members provide ongoing monthly support. Donations noted below are annualized.

Sustaining Members (\$250+)

Walter Bacigalupo
 Stephen A. Conant
 Nancy & Henri Marchand
 The McCauley Family

Sustaining Members (\$100-249)

Cynthia & Charles Calvin
 Sheila Kirschbaum

Sustaining Members (\$1-99)

Robert Gilmore

SPRING ANNUAL FUND DONORS

We thank the following Annual Fund donors whose support above and beyond membership dues provides critical discretionary funding for our diverse programs and projects.

Annual Fund Donors (\$250+)

Jeanne D'Arc Credit Union

Annual Fund Donors (\$100-249)

Grace Conway
 George & Carol Duncan
 Donald Pearson

Annual Fund Donors (\$1-99)

Charles & Deborah Cary
 George Dana
 Tom & Barbie Hogan
 William Lipchitz
 Laurel & David Martin
 Mr. & Mrs. Richard Peterson
 Iris & Charles Sarantos
 Cindy Stone

RENEWING MEMBERS

Renewing Members (\$250+)

George Behrakis
 Jane Loizeaux & Steven Grainger

Renewing Members (\$100-249)

Mrs. Judith Crotty
 William Dunclelee
 James & Terri L. Decker Kilmartin
 Paula & Ray Leavitt
 Karin Orr & Bill Loehfelm
 Daniel Singer
 Francis Warren, Jr. *in honor of Mr. Alfred Coburn's 90th birthday*
 Washington Savings Bank

"I became a "green" member [giving monthly] to maximize my charitable dollar. I know the money I give will be well spent on making my community greener and sustainable. The commitment I find in the Board and, especially, Jane Calvin is testament to all that is great about living in Lowell. Thank you!"

Walter Bacigalupo, member since 1997

Renewing Members (\$1-99)

Jo Anne and Read Albright
 Simone Allard
Belanger & Foley, Inc.
 Emma Kate Blydenburgh
 Richard & Pamela Bohne
 Elizabeth Brady
 David Bulman
 Frank & Rose Marie Carvalho
 Dolores & Matthew Czyzycki
 Suzanne deLesdernier
 Helen & Richard Fearon
 Queena Flomp Traggis
 Anne Marie Fortin
 Thomas & Alison Frost
 Jane Ginsburg
 Elizabeth & Jonathan Goodrich
 Stephen and Mary Kandrotas
 Claudine Langlois
 Rene Marchand
Morse Funeral Home, Inc.
 Martha & Rod Owen
 Philip & Patricia Ragnio
 M. Tiffany Reed
 Violet Santamaria
 April Thormahlen
 Naomi Title
 Charles Tsapatsaris
 Peter Ventura
 Carolyn Walsh
 David Willey
 Will Winslow

MEMBERSHIP RENEWAL

Membership renewals are sent on the anniversary of your last membership donation on a bimonthly basis. In mid-September renewals went out for all memberships that had expired or are up for renewal through the end of October 2007. Your prompt response to our first request will help us save on postage and administrative costs.

Please consider becoming a **Sustaining "Green" Member** and leverage even more with your support of our local work creating positive change on the ground in Lowell. Sustaining "Green" Members give monthly through their credit card (minimum \$5/month) are **thanked separately in the newsletter.**

If you are currently a \$25 member, please consider becoming a \$5/month Sustaining "Green" Member for a total of \$60/year. If you're currently a \$50 donor, consider giving \$10/month. You'll barely notice the increase but it will help us tremendously.

If you've given at a stable level over the years, please consider the impact of increasing your donation to a higher level upon renewing—jumping from \$25 to \$50 or \$50 to \$100 will also help significantly!

Quality of Life Campaign

WHAT DOES QUALITY OF LIFE MEAN TO YOU?

Please join us as we embark on an ambitious campaign to raise important discretionary funds to expand our diverse programs and projects. Please let us know if you would like to invest in Lowell's "Quality of Life". We can send you information or meet with you in person. We thank the following early donors in our Campaign:

- Butler Bank**
- James Cooney Real Estate & Ins.**
- Gururaj Deshpande**
- George & Carol Duncan**
- Enterprise Bank**
- Lowell Five**
- Staff of Dr. Mark Romanowsky**

We thank the following:

LP&CT's mission is made possible by those that go out of their way to help make Lowell a better place to live.

Concord River Signage Committee

Thank you for your insights in sorting lots of information into concise meaningful signage!

Chuck Griffiths, Sheila Kirschbaum, Chad Montrie, Maria Robarge, Michelle Todd, and Cindi Zorokong

Folk Fest Volunteers

Thank you for sharing your enthusiasm for the work of the Trust with Folk Fest attendees!

Richard & Pamela Bohne, Alan Cameron, Nancy Ciramella, Christine Cole, Brian Cutler, Matt Donahue, Lauris Donovan, Betsy Goodrich, Sheila Kirschbaum, Ivy Lee, Beth Logan, Henri Marchand, Irene Noble, Mark Romanowsky, Deb Sofia, Mary Trombly, and Mary Ann Visniewski **Anna Kate H. of Salisbury, NH** was the winner of our raffle trip for a free rafting trip!

Land Stewards

Thank you for your keen senses in caring for our properties.

Brian Cutler for helping to train all our land steward volunteers; Joe Brodeur, Jollene Dubner Park; Sandy Green, West Meadow property; Cara Johnson, Concord River Greenway; Heddi Nieuwsma & Nathan Moore, Spalding House & Nicole Drive properties; and all the "friends" of Coburn Park.

Photography

Thank you for sharing your photographs of our events with us!

Ray Houde
 Mark Vincenzen

Spalding House Landscaping

Thank you to Spindle City Corps for assisting with landscaping at the Spalding House once again this year!

Support the Lowell Parks & Conservation Trust. Become a member or renew today!

The **Lowell Parks & Conservation Trust** relies on membership dues for continuing our **mission** to protect the parks and open spaces of Lowell. If you haven't already, please consider joining the Trust today or renewing your membership.

Yes, I want to support the Lowell Parks & Conservation Trust!

\$250 \$100 \$50 \$25 \$15 \$ _____

Is your membership current?
Please see your address label.

- I've enclosed a **matching gift** form from my/my spouse's employer.
 I'd like to become a **tree free member** and donate \$ ____ monthly through my credit card
 My membership is current, this donation is to the **Annual Fund**.

Payment method: Check enclosed **Charge my credit card:** Visa MasterCard
Account # _____ **Exp.** _____ **Signature** _____

Name & address: _____

(For new e-news!) EMAIL: _____

Would you like to make a special donation?

We have established separate funds to support these projects, *above and beyond* membership dues:

- LP&CT Endowment Fund
 Spalding House Maintenance Fund
 Jollene Dubner Park Maintenance Fund

Please mail to: LP&CT, PO Box 7162, Lowell, MA 01852

✂ ----- ✂ ----- ✂ ----- Fall 2007 -----

Lowell Parks & Conservation Trust
PO Box 7162
Lowell, MA 01852

Address service requested

Non-Profit Org.
U.S. POSTAGE
PAID
PERMIT NO. 134
LOWELL, MA 01853

Fall 2007 NEWSLETTER

Printed on recycled paper

COLEC Donations

We thank the City of Lowell employees that have contributed to the City of Lowell Employees Campaign (COLEC) for local non-profits. Your support will leverage even more positive on the ground change.

Regional Membership

While the Trust's focus might be local our impact is regional. 40% of Trust members live outside of Lowell, including 24 towns outside Greater Lowell and 11 states! 60% of our members live in Lowell. Thank you for your support!

Upcoming Events

Please RSVP (978)934-0030

Concord River Greenway Tour

Saturday, September 29, 2007, 9am-12pm

Freedman Ballard Shedd A Legacy Gift

October 4, 2007, 6:30pm

Concord River Kayak Trip

Saturday, October 20, 2007, 10am-12noon

Annual Meeting

November 15, 2007

Save the date! To be held
at the Revolving Museum.

LP&CT Board of Directors

Dorothy Bickling
Brian Chapman
Christine Cole
Stephen Conant
Matthew C. Donahue, Esq. (Treas.)
Lauris Donovan
Sheila Kirschbaum (Clerk)
Henri Marchand (President)
William Martin, Esq.
Dr. Mark Romanowsky

Jane L. Calvin, *Executive Director*
Brian Cutler, *Project Specialist*